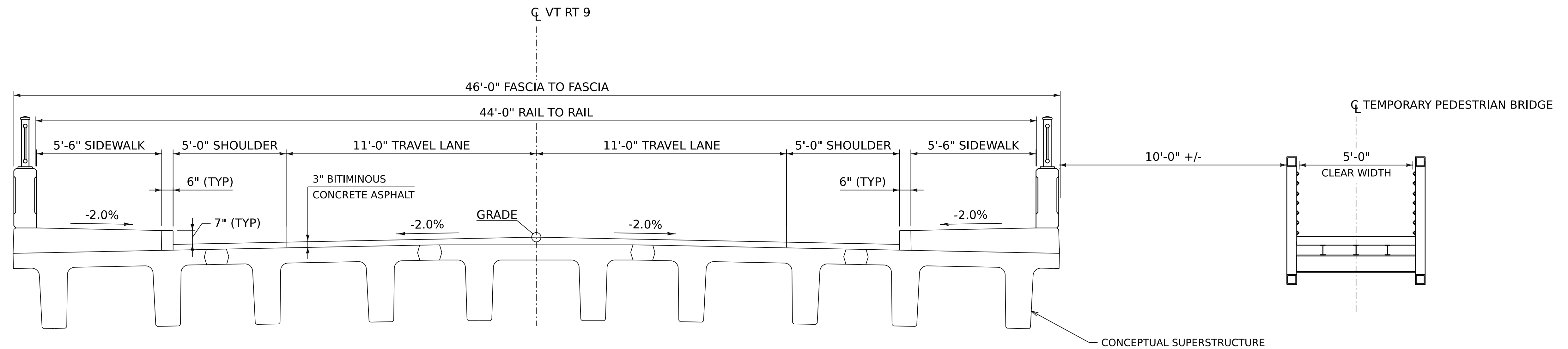


LEGEND	
	Stormwater Drainage
	Electric Line Overhead
	Water Line
	Sewer Line
	Utility Line

PROJECT NAME:	WILMINGTON		
PROJECT NUMBER:	BF 010-1(58)		
<hr/>			
FILE NAME: Utilities_Detour_1_pr.dgn		PLOT DATE:	9/5/2025
PROJECT LEADER: J.L.ROY		DRAWN BY:	K.D. FLORES
DESIGNED BY: K.D. FLORES		CHECKED BY:	N.A. TRUSLOW
UTILITY RELOCATION LAYOUT		SHEET	1 OF 1

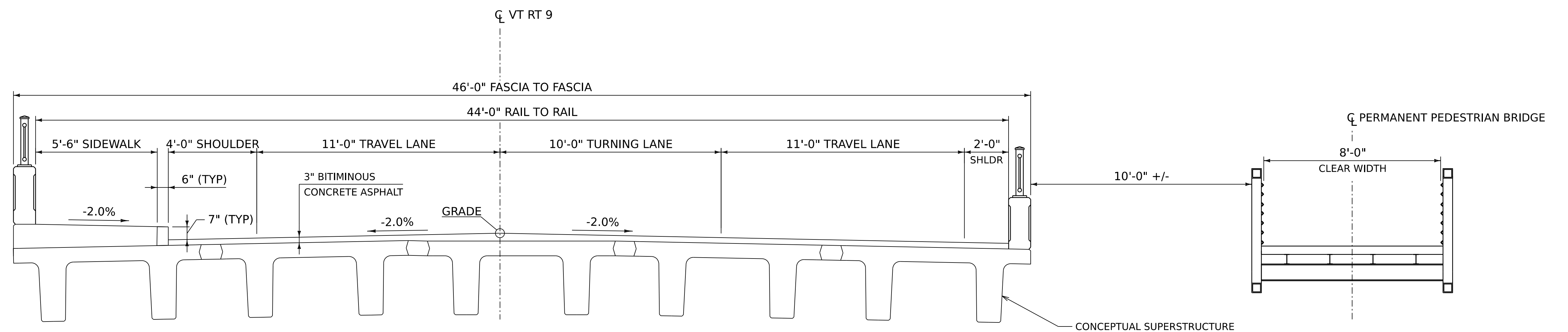






ALTERNATIVE 3A TEMPORARY PEDESTRIAN BRIDGE

SCALE  $\frac{3}{8}" = 1'-0"$



ALTERNATIVE 3B PERMANENT PEDESTRIAN BRIDGE

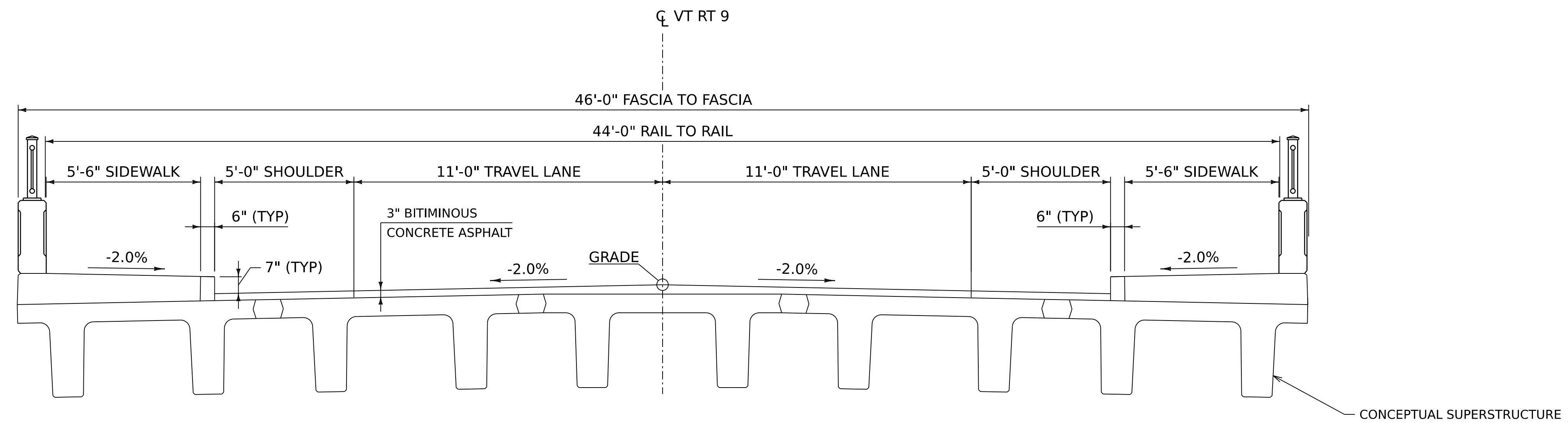
SCALE  $\frac{3}{8}" = 1'-0"$



PROJECT NAME: WILMINGTON  
PROJECT NUMBER: BF 010-1(58)

FILE NAME: z22b394\_bridge\_typ  
PROJECT LEADER: J. L. ROY  
DESIGNED BY: N. A. TRUSLOW  
ALTERNATIVES 3A AND 3B

PLOT DATE: 7/11/2025  
DRAWN BY: R. E. THATCHER  
CHECKED BY: J. L. ROY  
SHEET 1 OF 2



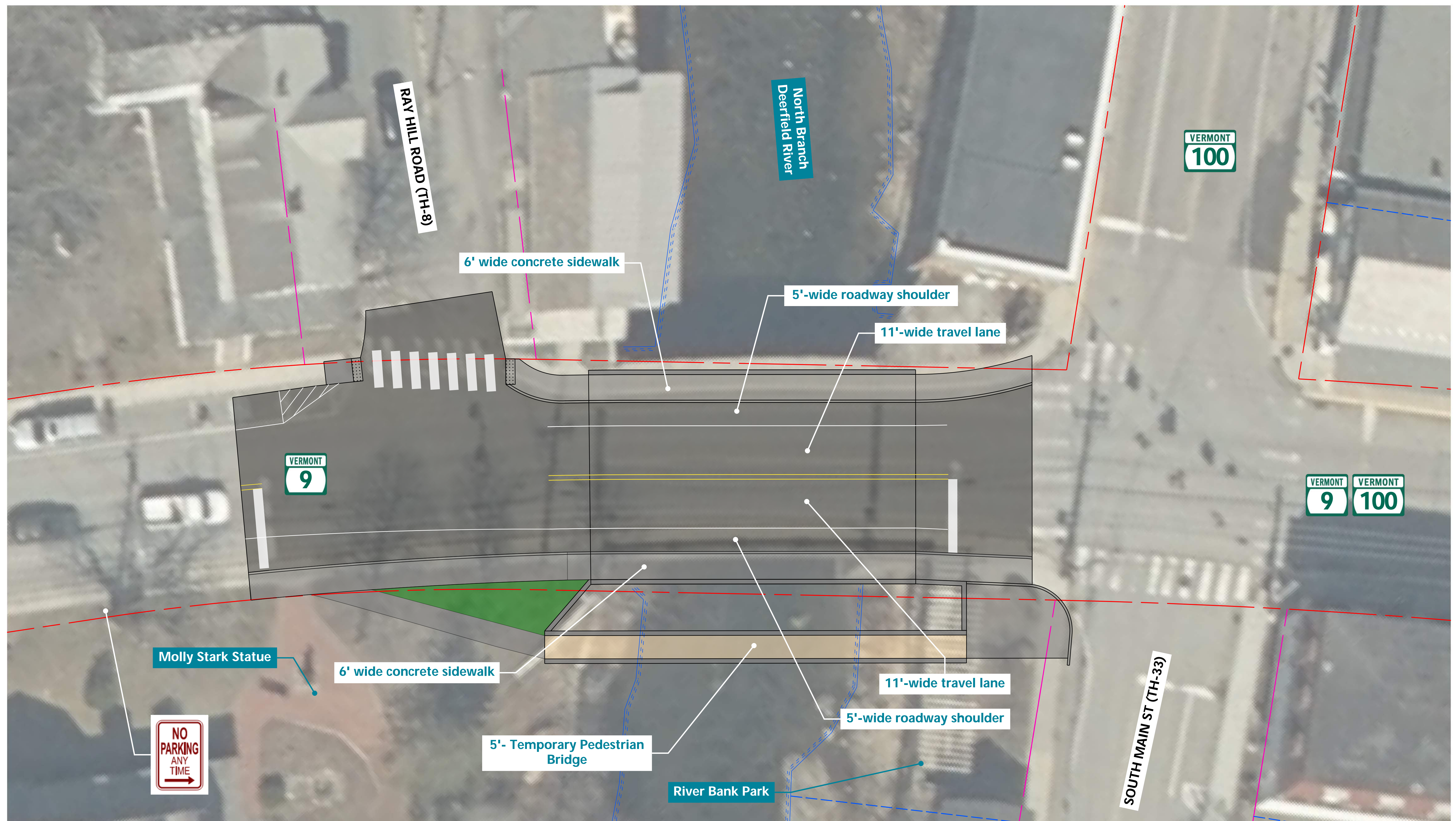
ALTERNATIVE 3C TEMPORARY PEDESTRIAN DETOUR

SCALE  $\frac{3}{8}" = 1'-0"$



PROJECT NAME:	WILMINGTON	PLOT DATE:	7/11/2025
PROJECT NUMBER:	BF 010-1(58)	DRAWN BY:	R. E. THATCHER
FILE NAME:	z22b394_bridge_typ	CHECKED BY:	J. L. ROY
PROJECT LEADER:	J. L. ROY	SHEET	2 OF 2
DESIGNED BY:	N. A. TRUSLOW		
ALTERNATIVE 3B			

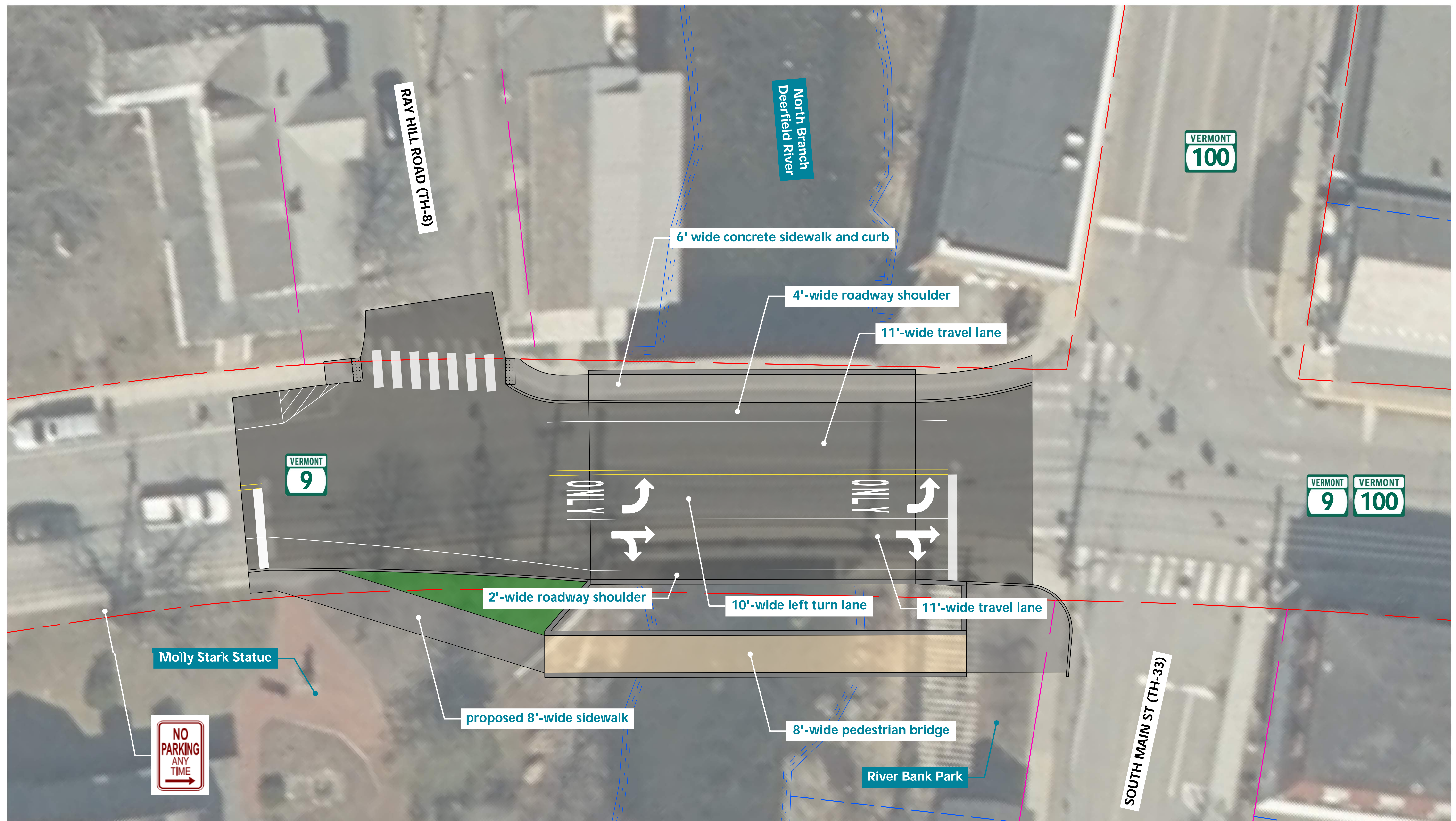




# Wilmington Bridge No. 31

Alternative 3A: 46' Wide Bridge with Temporary Pedestrian Bridge

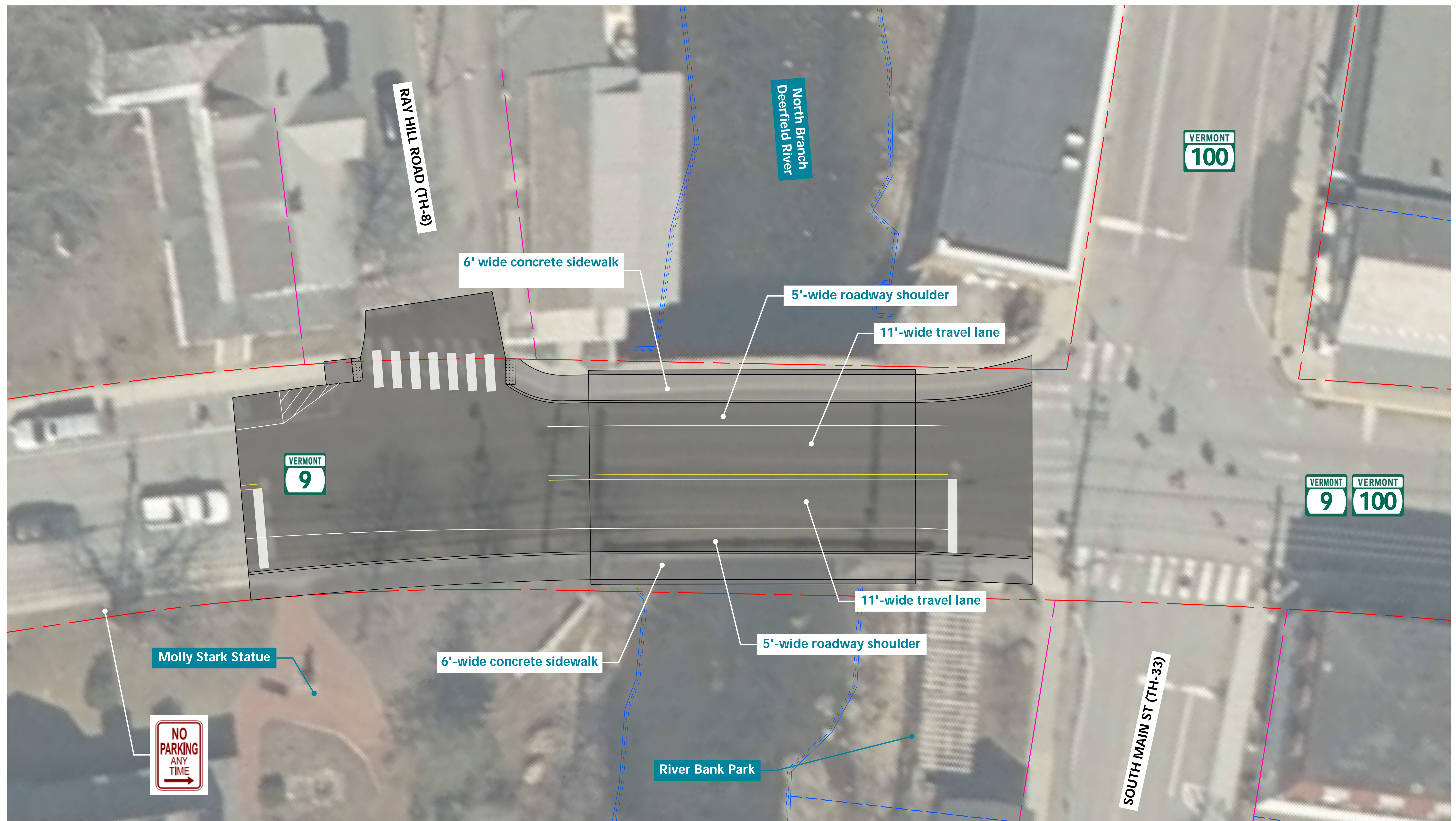




# Wilmington Bridge No. 31

Alternative 3B: 46' Wide Bridge with Permanent Pedestrian Bridge

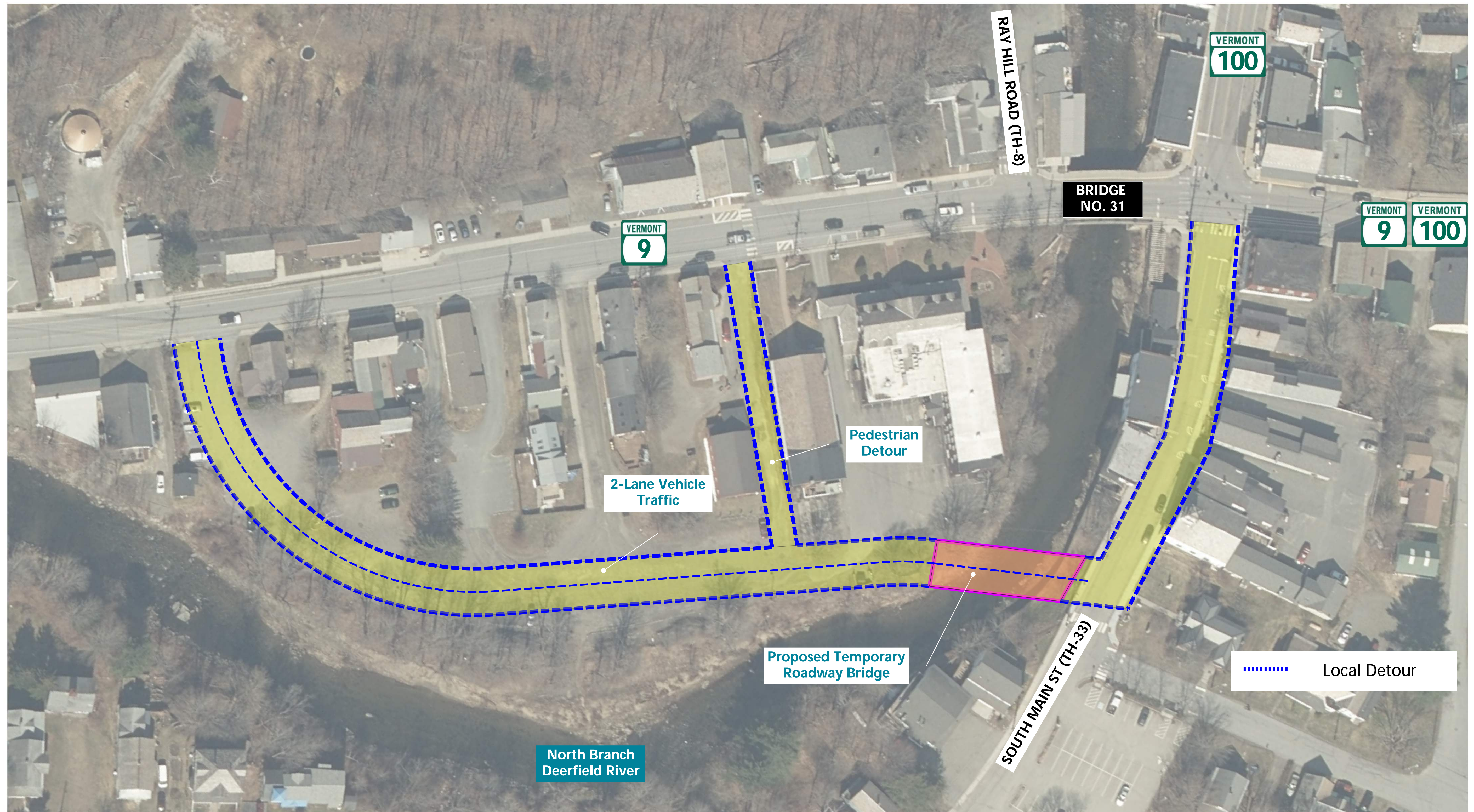




## Wilmington Bridge No. 31

Alternative 3C: 46' Wide Bridge with  
Temporary Pedestrian Detour

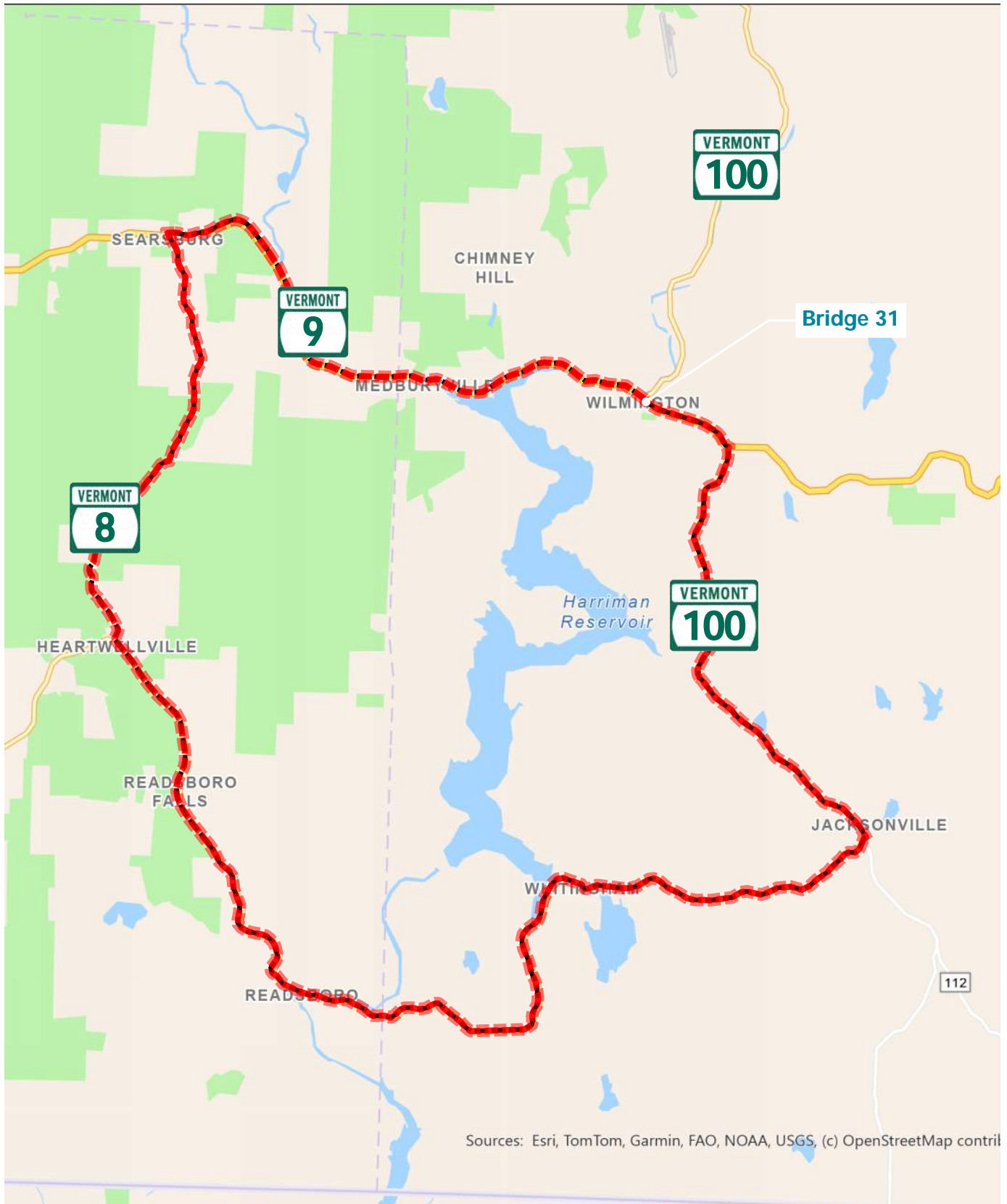




# Wilmington Bridge No. 31

## Conceptual Temporary Bridge and Roadway Layout

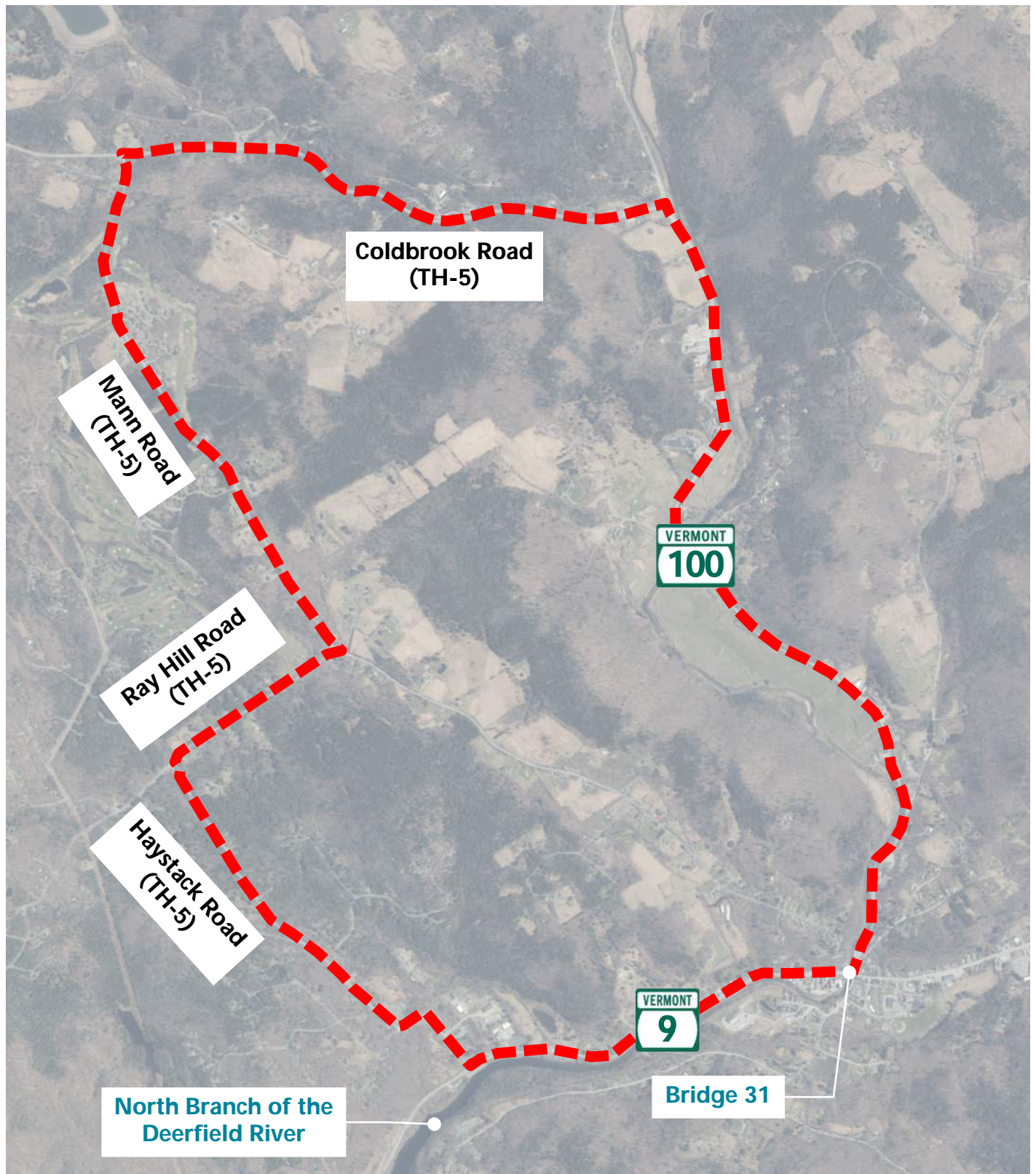




# Wilmington Bridge No. 31

## Signed Detour





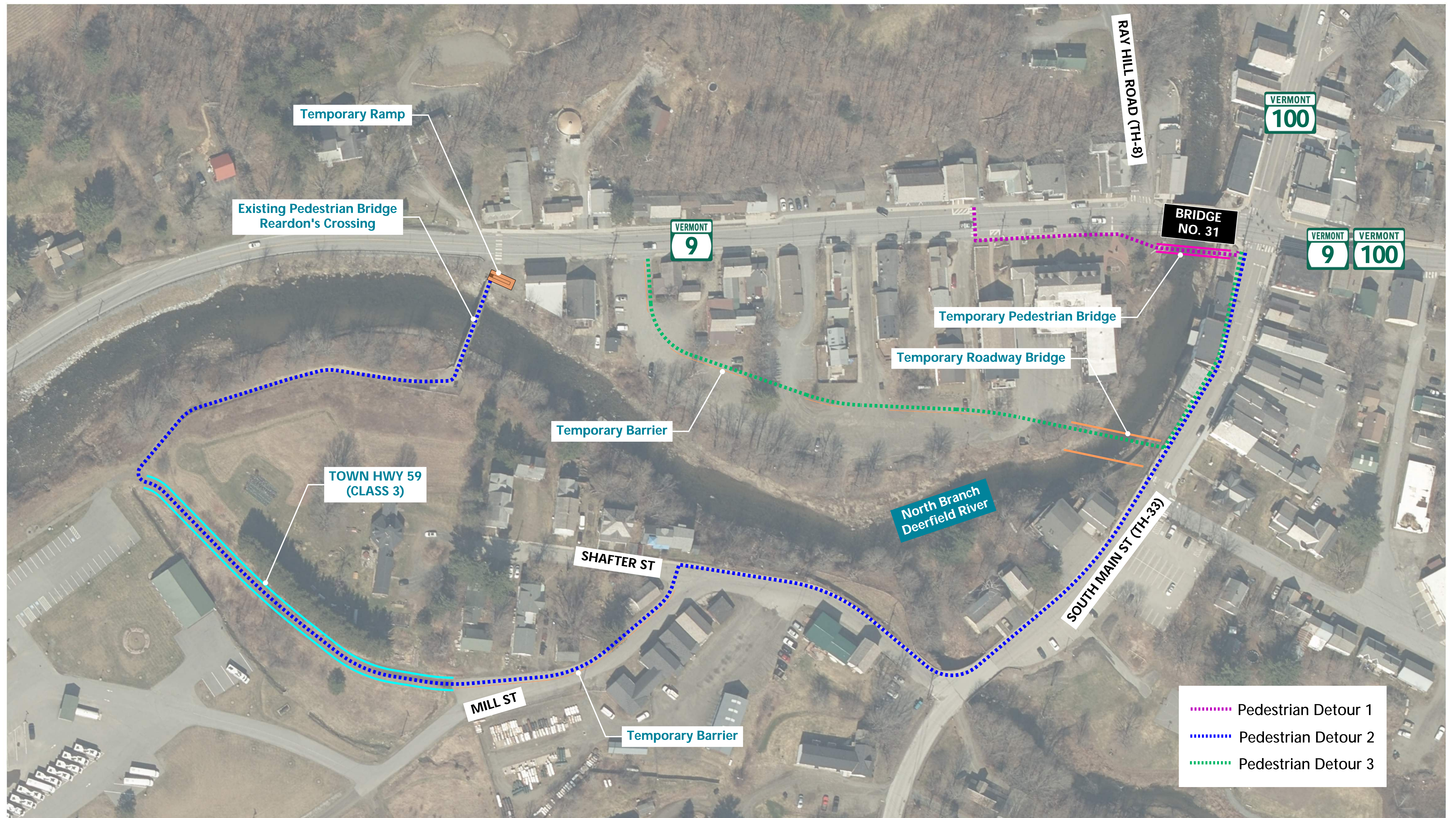
# Wilmington Bridge No. 31

Local Bypass



09/05/2025





# Wilmington Bridge No. 31

## Pedestrian Detour Alternatives