

Wilmington Veterans Memorial Park

Presentation

By Craven's Design & Doucette Landscape Design

Why do we need a Veterans Memorial Park?

- Vietnam to present day veterans are not included in any memorial in Wilmington
- More than 90% of veterans living in Vermont are from the Vietnam war and onwards
- All veterans risked their lives to protect our country and deserve to be honored for their bravery and sacrifices
- Develop an underutilized parcel of land and create an attraction that will draw visitors for years to come

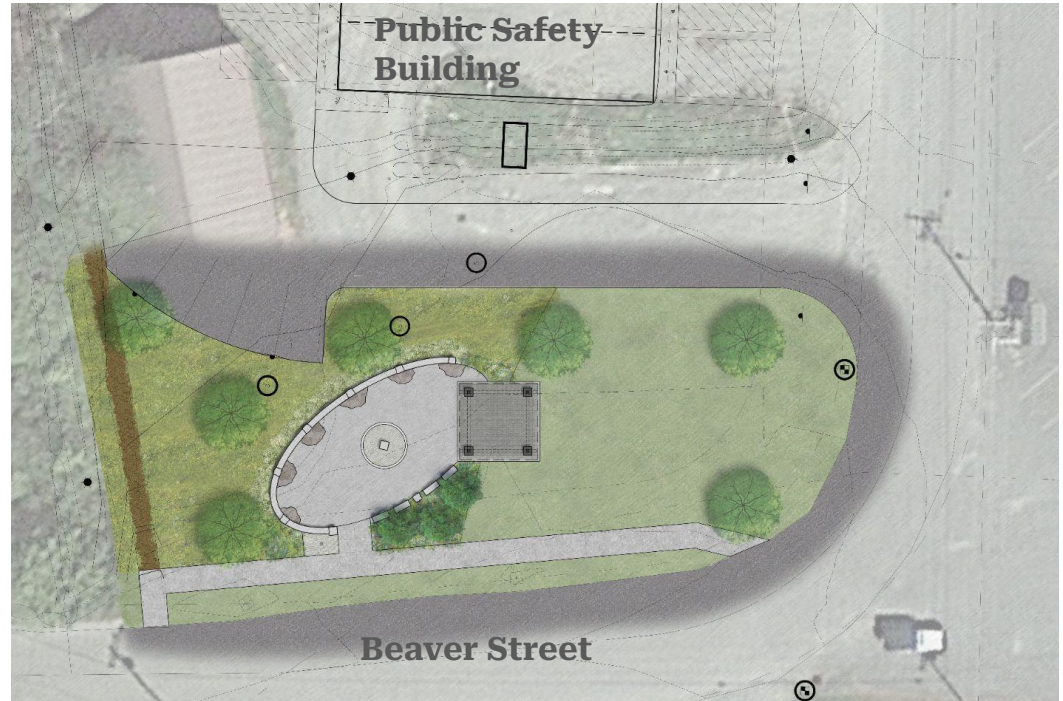
Where will it be located?

- 40 Beaver Street
- Town owned
- Under-utilized
- Conveniently located adjacent to OSCC, Tennis courts, Public Safety building, & fields
- MOOVer stop nearby

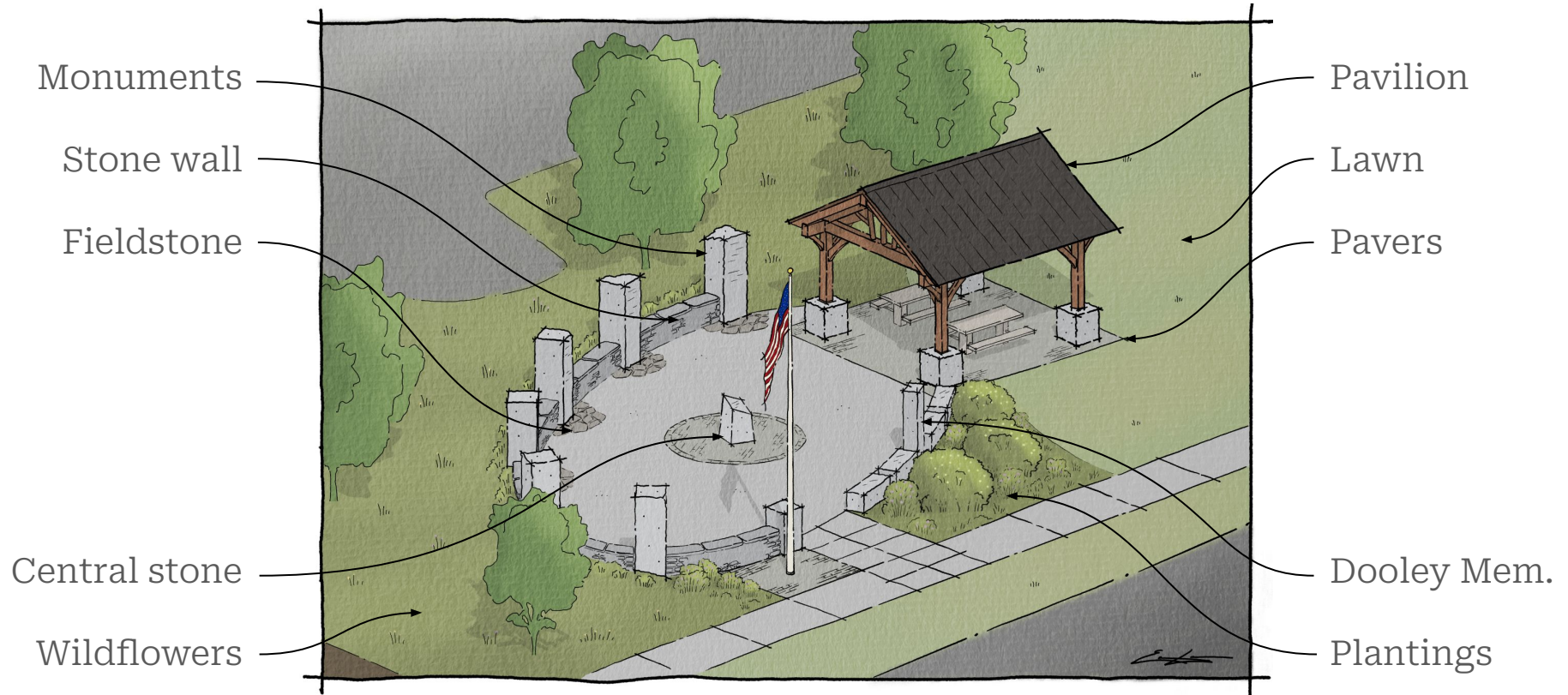


Overview of Design

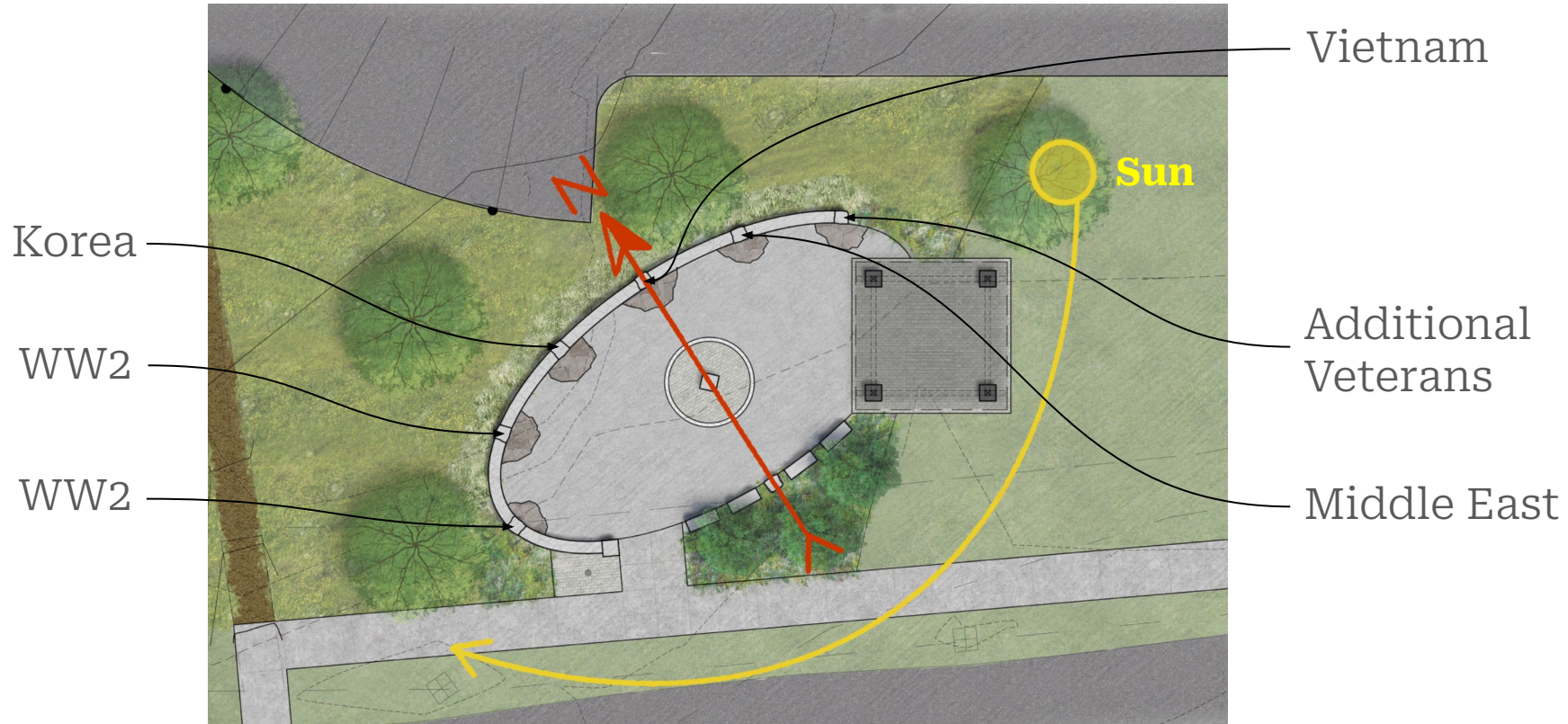
- Open and inviting, encouraging users to read & reflect
- Curved walls & monuments provide a sense of embrace
- Native stone, plantings, and timber
- Pavilion provides shelter and seating
- Accessible



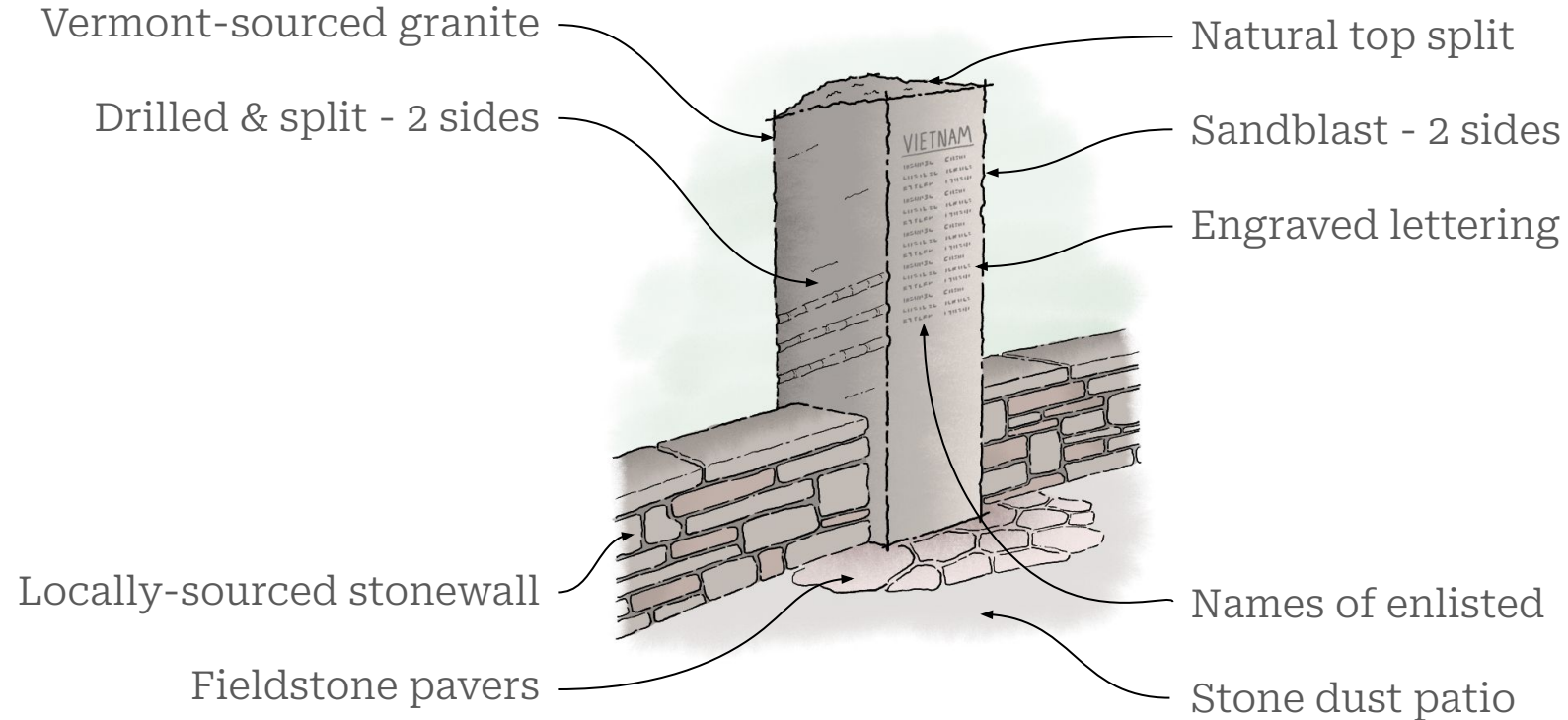
Design Elements



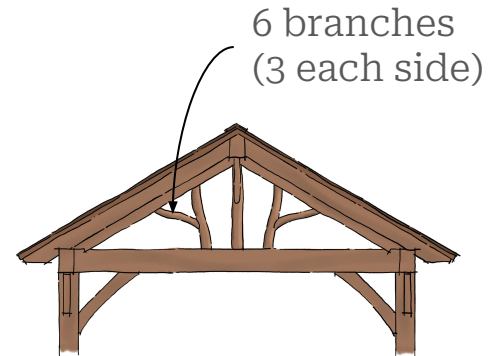
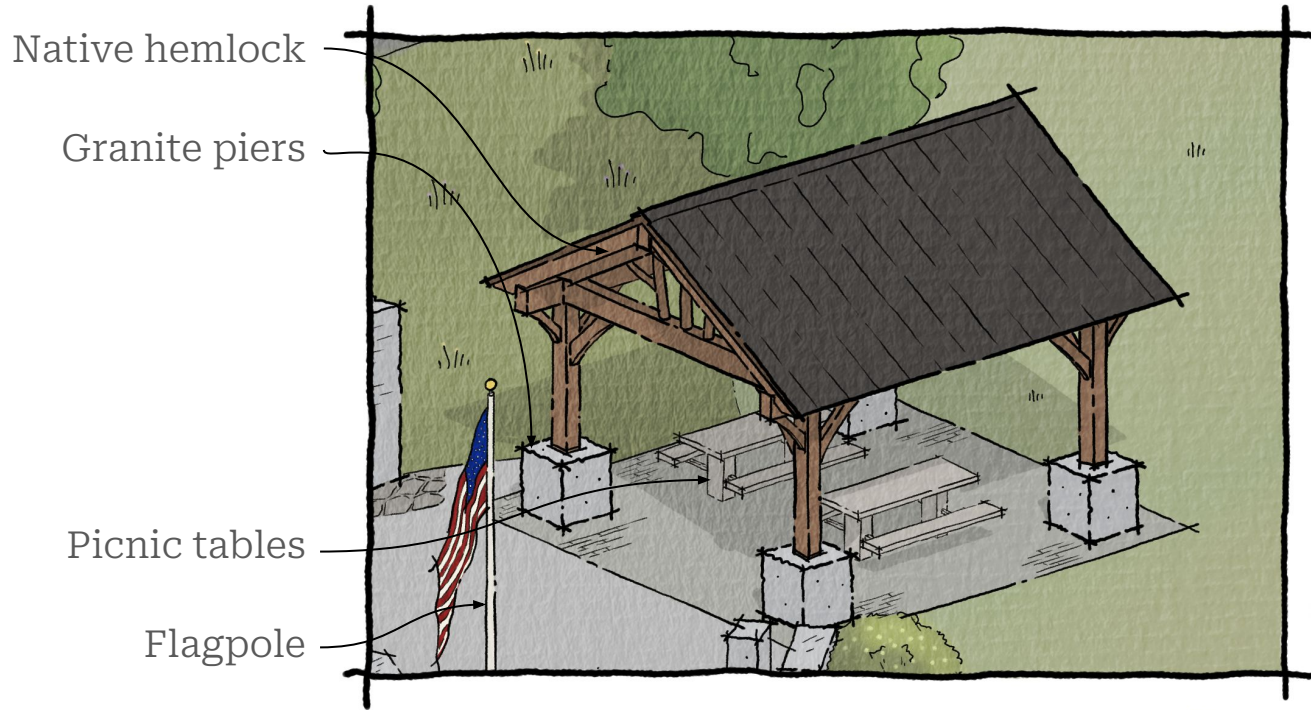
Monument Locations & Path of Sun



Monument Design



Pavilion Design



Timber truss

Symbolizes the
six branches of
the US Military

Fundraising goal and progress

- Fundraising goal is \$250k
- \$70k has been raised so far (28% of fundraising goal)
- We need the support of full-time residents, part-time residents, and visitors to make this happen
- Donations of all amounts appreciated
- Accepting check, online payment, and Venmo @WilmingtonVT
- Fundraiser BBQ occurring on July 20th, 12-3pm, at Fire Department

Thank you and Please Donate!

