

Town of Wilmington, Vermont Public Safety Facility Committee Public Update



Via Zoom
Thursday October 22, 2020
6:00pm – 7:00pm



Agenda

- Project Background
- Timeline Progress
- Design Progress
- Questions & Answers

Project Background

- August 28, 2011 – Tropical Storm Irene flooded the village of Wilmington, including PD & PD. Both departments were significantly displaced during and after the flood while the respective buildings were remediated.
- Summer 2015 – the Select Board (SB) convened the 1st committee to explore re-locating fire, police and possibly rescue services out of the flood plane.
- December 2015 – committee presented unanimous recommendation to build on the site of the former highway garage at 40 Beaver Street. The recommendation stated ‘The site is most desirable because of its central location in town and the fact that it’s already town owned and therefore requires no land acquisition costs.’

Project Background

- Summer 2019 – the SB convened the 2nd committee to explore re-locating fire and police out of the flood plane.
- Fall 2019 – the committee unanimously recommended to the SB building at the 40 Beaver Street site for the following reasons:
 - central for deployment of personnel
 - accessible by volunteer fire fighters
 - has municipal water and sewer present on site
 - sufficient to fit both fire and police departments based on previously drawn plans
 - already owned by the Town
 - maintains police presence in the Village

Project Background

- Fall 2019 – with the approval of the SB the committee held a competitive bid for architectural and engineering services
- December 2019 – bids received and reviewed. NBF Architect from Rutland, VT recommended to the SB to hire for feasibility and conceptual design. The SB approved \$39k for this phase from the 1% local option tax fund.
- January 2020 – feasibility and conceptual design work and public input meeting.
- Town Meeting 2020 – article passed to raise \$221,000 to fund NBF through design, bid and construction

Project Background

- March-October 2020 – NBF Architects in concert with design team sub-contractors Engineering Services of Vermont and DeWolfe Engineering substantially complete site and building design. Test borings completed summer 2020.
- November 30, 2020 – bid invitation to general contractors
- December 24, 2020 – bids due
- January 2021 – provisional GC award
- March 2, 2021 – bond vote
- May 2021 – groundbreaking
- June 2022 – building completion

Timeline Progress

✓ RFP issued for public bid	November 1, 2019
✓ Pre-Bid Site Visit	November 21, 2019
✓ RFP Due Date & Bid Opening	December 4, 2019
✓ Bid Review & Selection of Recommended Bidder	December 12, 2019
✓ Review with Selectboard & Confirm Preferred Bidder	December 17, 2019
✓ Town Meeting Vote	March 3, 2020
✓ Bid Award – Phase II	March 2020
✓ Site Feasibility Scope Complete	August 2020
Facility Designs & Bid Documents Complete	October 2, 2020 Nov 27, 2020
RFP for General Construction	October 9, 2020 Nov 30, 2020
Pre-Bid Meeting	October 21, 2020 Dec 7, 2020
Bids Due	December 15, 2020 Dec 24, 2020 10am
Town Meeting Day vote	March 2, 2021
Bid Award / Construction Begins	May 1, 2021
Project Completion	June 30, 2022

We've had some schedule drift due to COVID but are on track to have a bidder selection in time for budget season

Design Progress



- Initial exterior design sketch February 2020
- 3-story NE corner section
- Basic site layout and building orientation w/ apparatus bay doors facing east

Design Progress

Square footage of the building:

Police Department = 4,860 SF

Fire Department = 11,160 SF

Total = 16,020 SF

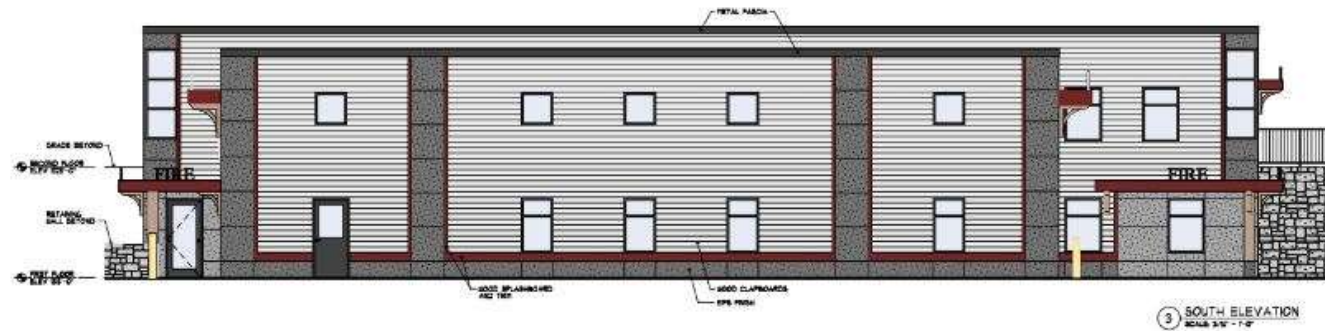
Design Progress



N.B.F.
ARCHITECTS

34 1/2 Court St. Barre, Vermont 05810
Phone 802 775-1101 Fax 775-6085
e-mail: info@nbfarchitects.com

Design Progress



New
Construction for:
**Wilmington
Public Safety
Facility**
Beaver Street
Wilmington, VT 05363

10/1/2010
Date

DRB HEARING
Issued For

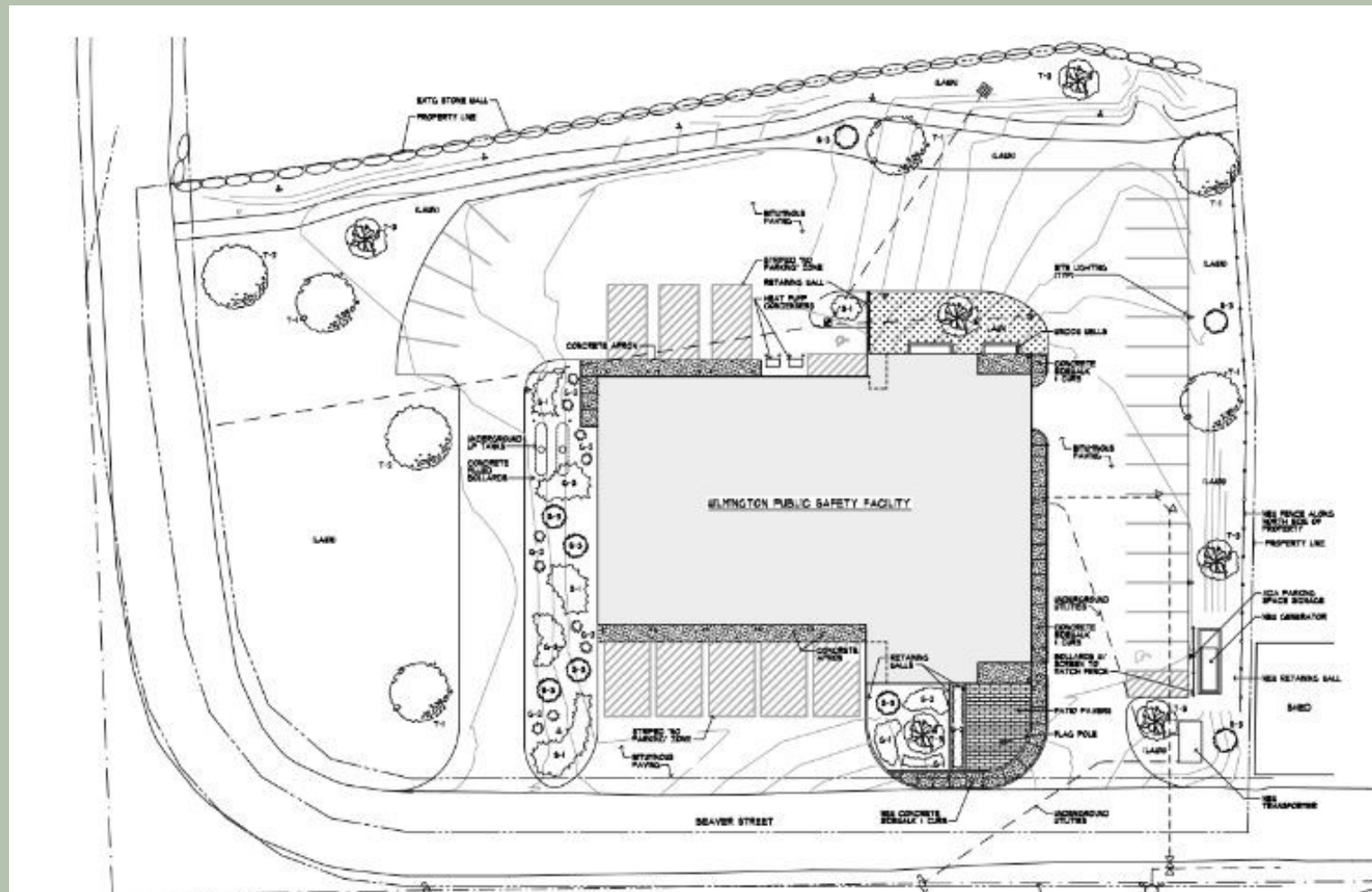
BUILDING
ELEVATIONS -
COLOR CONCEPT

Drawing Title

DRB-2

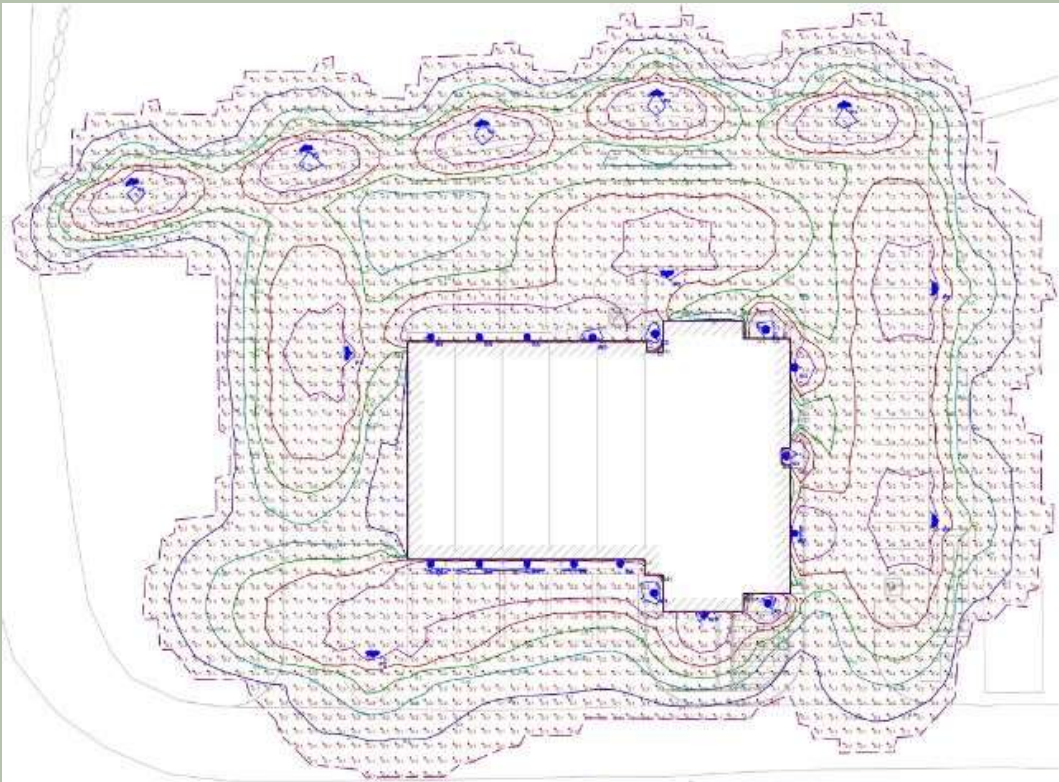
Drawing Number

Design Progress



[illegible]

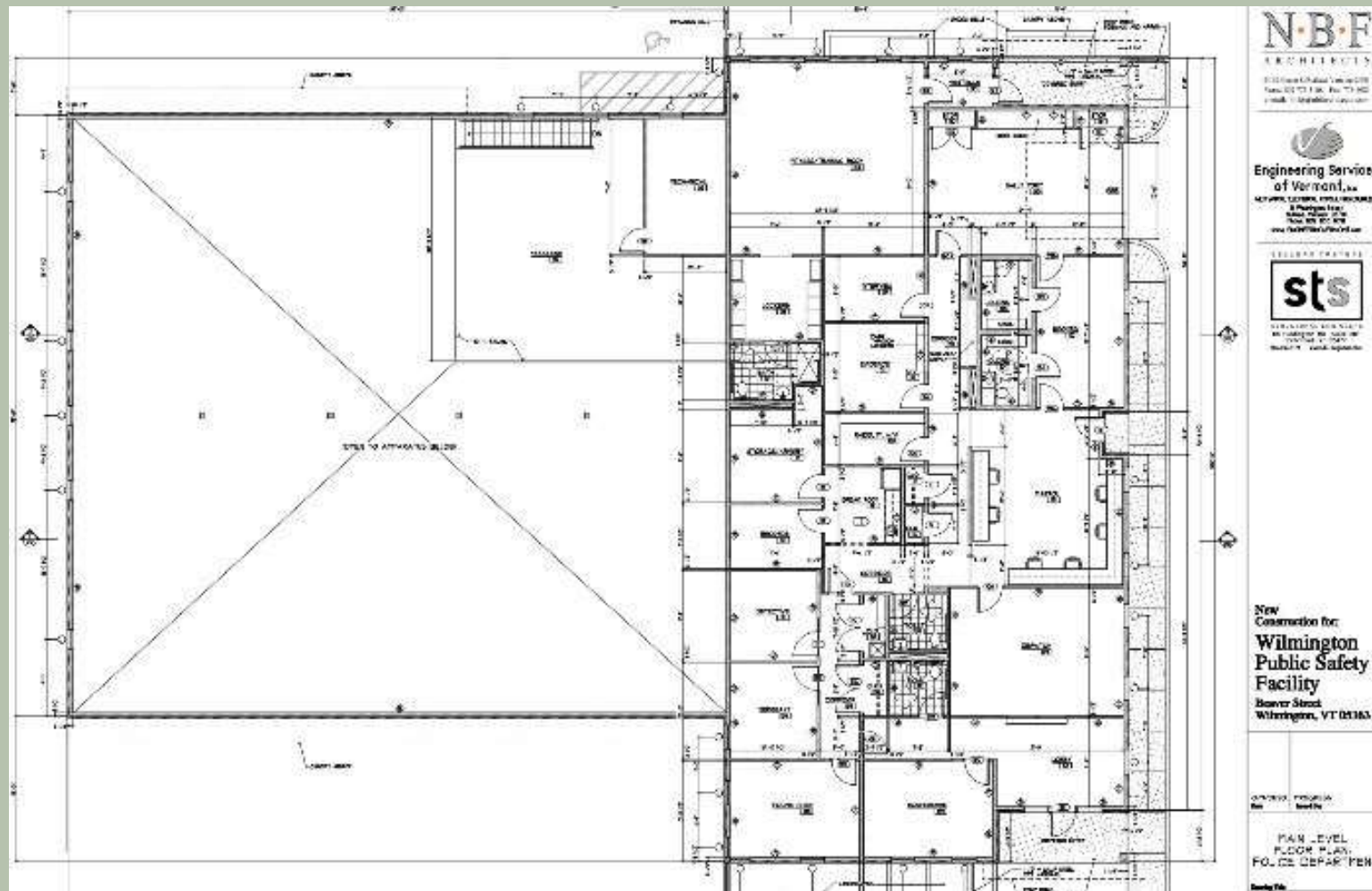
Design Progress



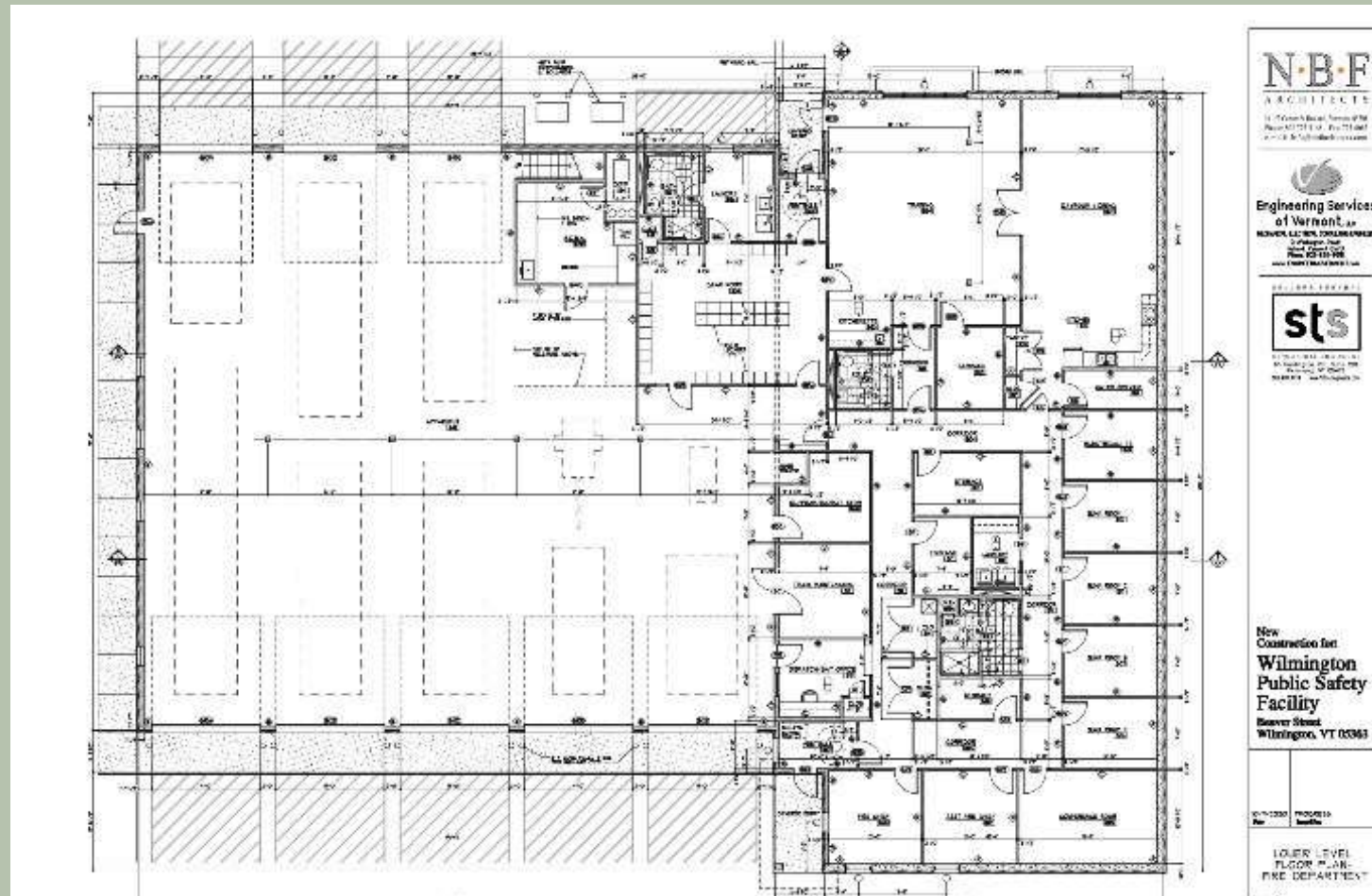
Schedule								
Symbol	Label	Image	QTY	Manufacturer	Catalog Number	Number Lamps	Lumens per Lamp	Wattage
	P1		5	Kim Lighting	UR20-241-25-347-3-CLR-PT	1	2837	75
	P2		5	Kim Lighting	UR20-241-65-347-3-CLR-PT	1	6293	65
	R3		6	SIGNIFY	STR00K10	1	977	13.8
	R4		8	SIGNIFY		1	1912	23.9
	WP		3	RAB LIGHTING INC. RE LIGHTING	SLIM127	1	1921	15.9

Statistics				
Description	Symbol	Avg	Max	Min
SITE		1.0 ft	9.2 ft	0.0 ft

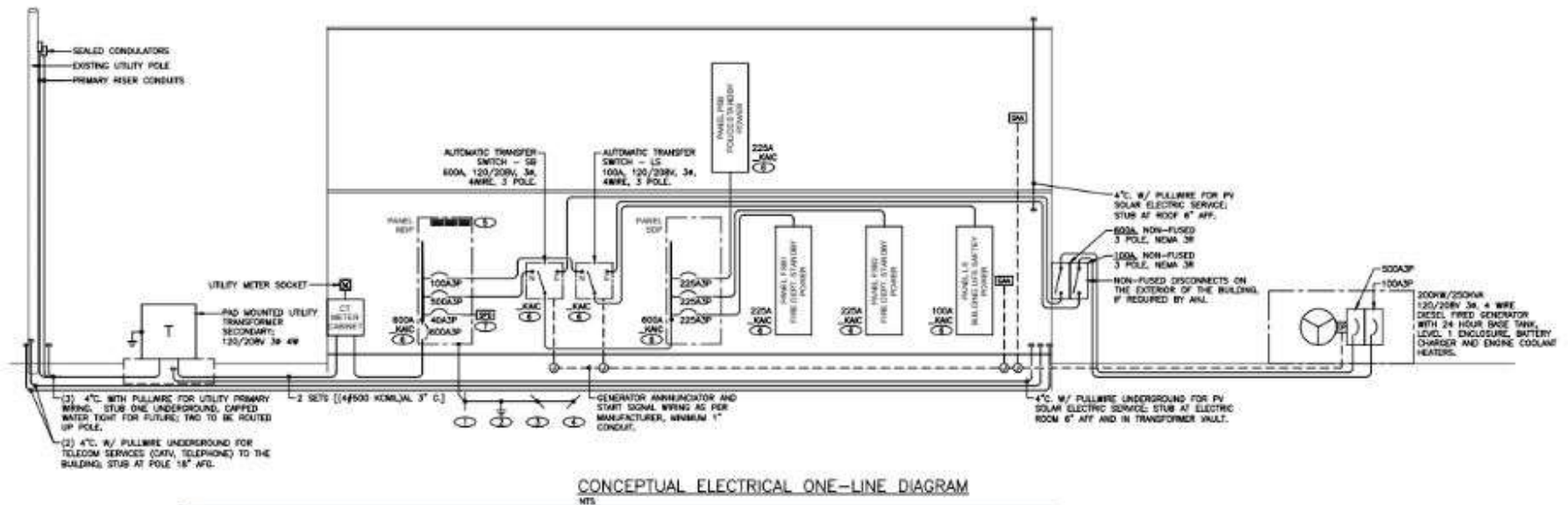
Design Progress



Design Progress



Design Progress



Public Feedback

- Request to incorporate greenspace in the planning of the facility and make the site open to as many users as possible was received by the committee.
- This resulted in site re-design and green space with public/trail access.
- Request to be vigilant about project scope and cost.
- This resulted in building re-design and reduction in size.

Useful Links to the Project

- <http://wilmingtonvermont.us/committees-minutes/public-safety-facility-committee/public-safety-facility-project/>
- <https://www.dropbox.com/sh/5mqmrczl9gxcfqe/AACrLkTQtQCxn-BqNY7-yEVQa?dl=0>
- <https://wilmingtonvermont.us/committees-minutes/public-safety-facility-committee/>

Questions & Answers

The Wilmington Public Service Facilities Committee thanks you for your input and support of this project. We welcome participation at our regularly scheduled public meetings the 2nd and 4th Thursday of each month.

Respectfully,

Scott Moore
Greg Murano
Dennis Richter
Mel Demock
Jeremy White
Chuck Clerici

