

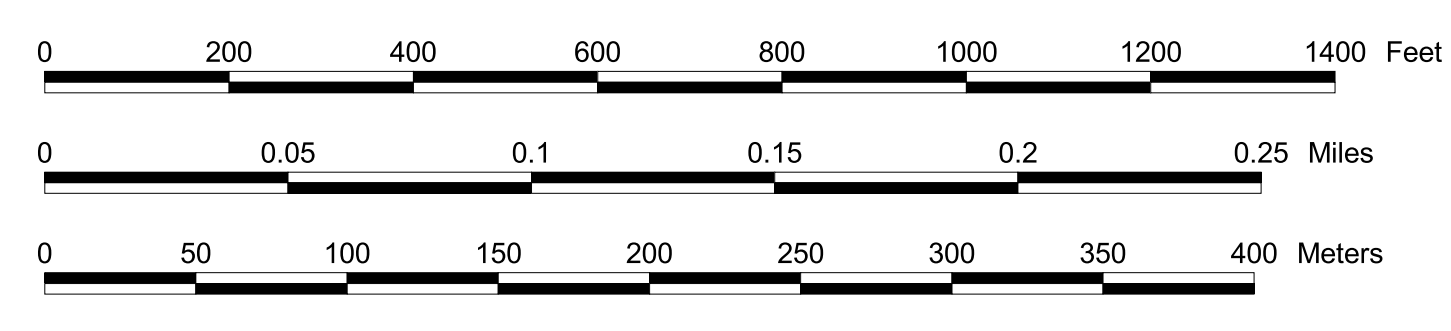
Disclaimer:  
Cartographic Technologies, Inc. (CTI) assumes no liability as to the  
sufficiency, accuracy, or the user's interpretation of the data delivered  
hereon.

Cartographic Technologies, Inc.  
65 • Tav 3 Mapping • Programming  
P.O. Box 992, Putney, VT 05346  
cartographictechnologies@gmail.com

Current to  
**April 1  
2018**  
Wilmington, VT

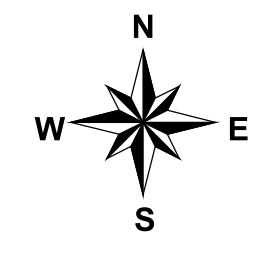
Map Scale 1:2,500  
1 inch equals 208.4 feet  
1/2 inch square equals 1/4 acre

This map is for assessment purposes only.  
It is not to be used for description,  
conveyance, or determination of legal title.



**Acreage**  
A Deeded  
AS Surveyed  
AC Calculated  
Ac GIS Calculated

- 1 Block Number
- 42 Parcel Number
- 32.2 Parcel Acreage
- 150 Road Frontage
- ① Sublot Number
- ⊕ Leader Lines
- ⊕ Sheet Corners
- ⊕ Brooks & Streams
- Parcel Lines
- Parcel Line - Common Ownership
- Lot Subdivision
- Land Hook (Common Ownership)
- Road Frontage
- Private Right-of-Way
- Private Road
- Town Line
- Match Line
- 20' Contour



**Map Sheet  
Haystack  
South**

Villages:  
Castle Rock, Cedar Creek, Country Club,  
Davis Mowing, Handle Road, Hazeltine,  
High Peak, Ironwood, Meadowbrook,  
Mill Ponds, Overlook, Passerwood,  
Quail Hollow, Spruce Valley, Spyglass Hill,  
Sugar House, Two-Brook

1	2	3	4
5	6	7	22
20	21	23	
8	9	10	