



Wilmington

VT 100 Bridge 47

Wilmington STP 013-1(14)

Project Location: Town of Wilmington in Windham County on VT 100 over an unnamed brook. The bridge is located approximately 2.1 miles south of the intersection of VT 100 and VT 9.

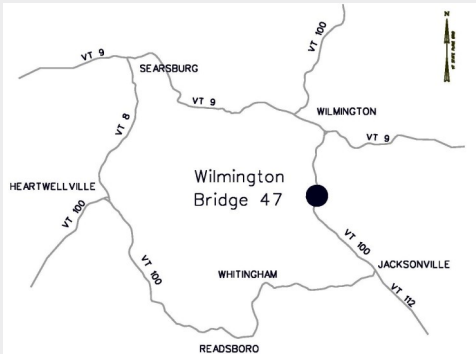
The Wilmington VT 100 Bridge 47 project will replace the existing metal pipe arch culvert, with a new precast concrete box culvert that meets current design standards. The existing culvert was built in 1949 and is 10'-8" wide by 6'-11" high. The new culvert is 16' wide by 6' high.

The Vermont Agency of Transportation evaluated alternatives for replacement of Wilmington VT 100 Bridge 47 and presented the proposed replacement structure at a public forum on October 18, 2012. The design addresses the span and height required to allow for adequate hydraulic capacity. As a result of the increased width of the new culvert, the waterway area will be increased by 60%.

The new bridge will be a Precast Concrete Box Culvert, which has a relatively short construction period and comparatively low construction and maintenance costs. The roadway typical section over the box culvert is two 11' lanes with 4' shoulders. The new guardrail is a W-Beam guard rail common to VT roadways.

The bridge will be constructed this summer using Accelerated Bridge Construction methods, which will expedite construction and reduce disturbance to the public. The Road is scheduled to be closed at the culvert over one weekend starting on Friday at 6:00 pm and concluding by Monday morning at 6:00 am. The contractor has several weekends to choose from between July and the end of August to complete the installation of the new culvert. The contractor will provide the Agency with the scheduled weekend for the closure well in advance of construction and the town of Wilmington will be notified two weeks prior to the road closure. Construction activities will take place prior to and after the closure in order to complete the project on time.

For additional information regarding this project, please contact the Project Outreach Manager, Jacqueline Dagesse at jdagesse@eivtech.com or 802-324-5522.



PROJECT MILESTONES

Bid Advertisement
February 2014

Contract Award
March 2014

Target Construction Schedule
June thru August 2014

Bridge Closure Period
August 2014



Wilmington

VT 100 Bridge 47



Target Construction Schedule: Construction activities will take place beginning in late June 2014. The allowable bridge closure period is one weekend in July or August. Due to scheduling conflicts and variable weather patterns, the contractor has 5 weekends to choose from for the closure. The contract is scheduled to be completed by September 5, 2014.

Contractor: The low bidder was Miller Construction, Inc. at \$466,935.00.

Cost: M&M Construction Inc. was the low bidder \$466,935.00.

Project Manager: Kristin Higgins, Senior Accelerated Bridge Program Project Manager

Resident Engineer: Chad Greenwood

During construction, traffic will be re-routed onto VT 9 and VT 8.

From the North on VT 100S:

Turn right on VT 9 at its intersection with VT 100. Continue on VT 9 to Searsburg and take a left on VT8. Continue on VT 8 until VT 100. Take a right to continue on VT 100 South. Take a left on VT 100N in Jacksonville for VT 112.

From the South on VT 100N:

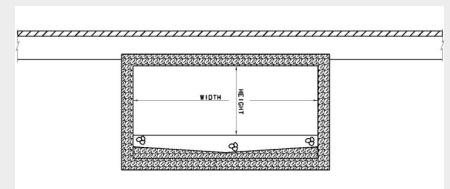
Turn left onto VT 8 in Heartwellville and continue to Searsburg. Take a right onto VT 9. Take a left onto VT 100N in Wilmington.



VT 100 Looking North towards Route 9



VT 100 Looking south towards Whitingham.



Generic Bridge Element Description



<https://www.facebook.com>



<https://twitter.com/511VT>

